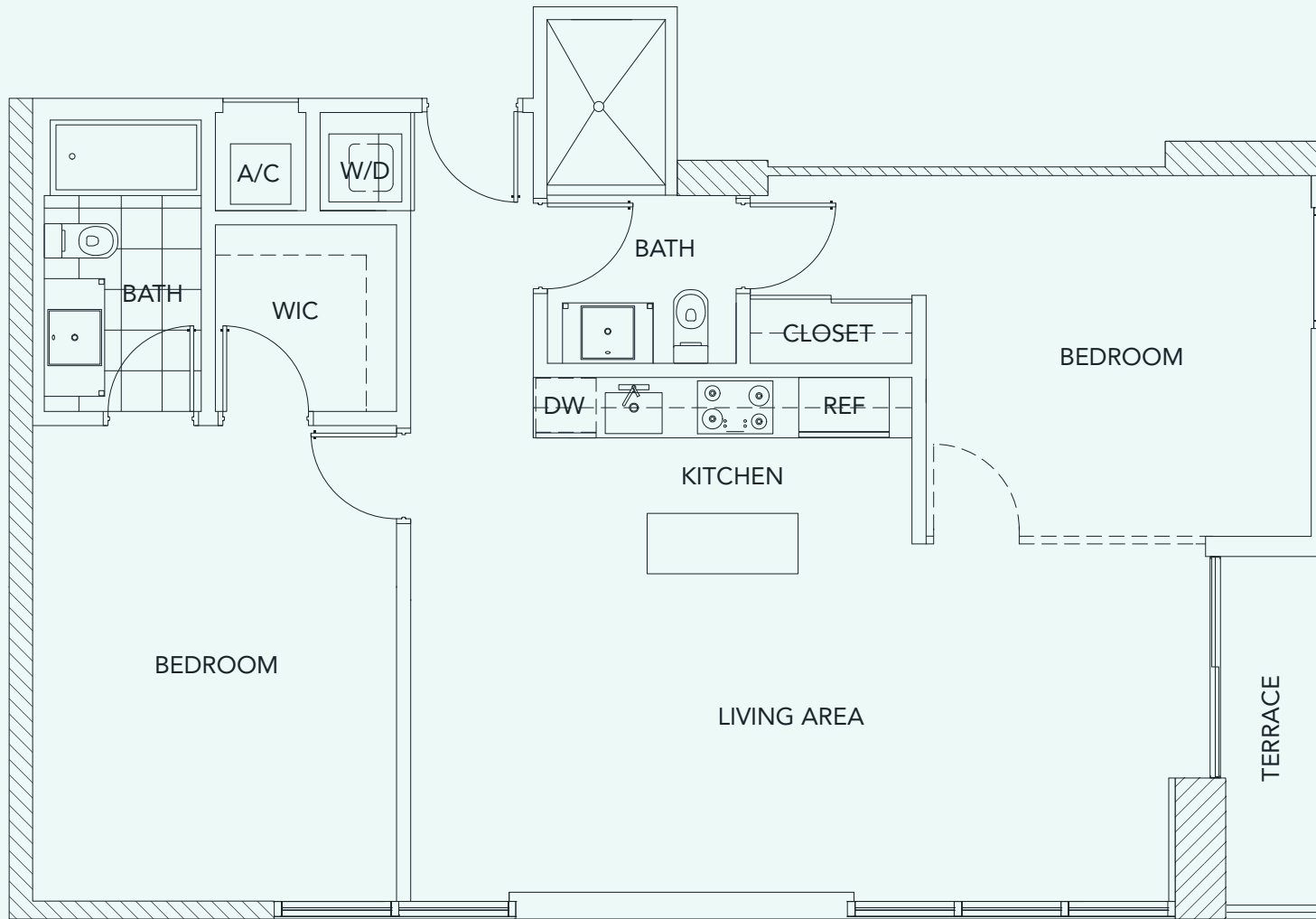


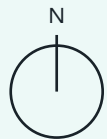
UNIT A



BEDROOM 2
BATH 2

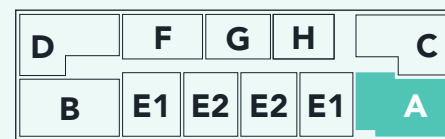
A/C 1,131 SQ.FT. 105 SQ.M.
TERRACE 42 SQ.FT. 3.9 SQ.M.

TOTAL 1,173 SQ.FT. 108.9 SQ.M.



KEYPLAN

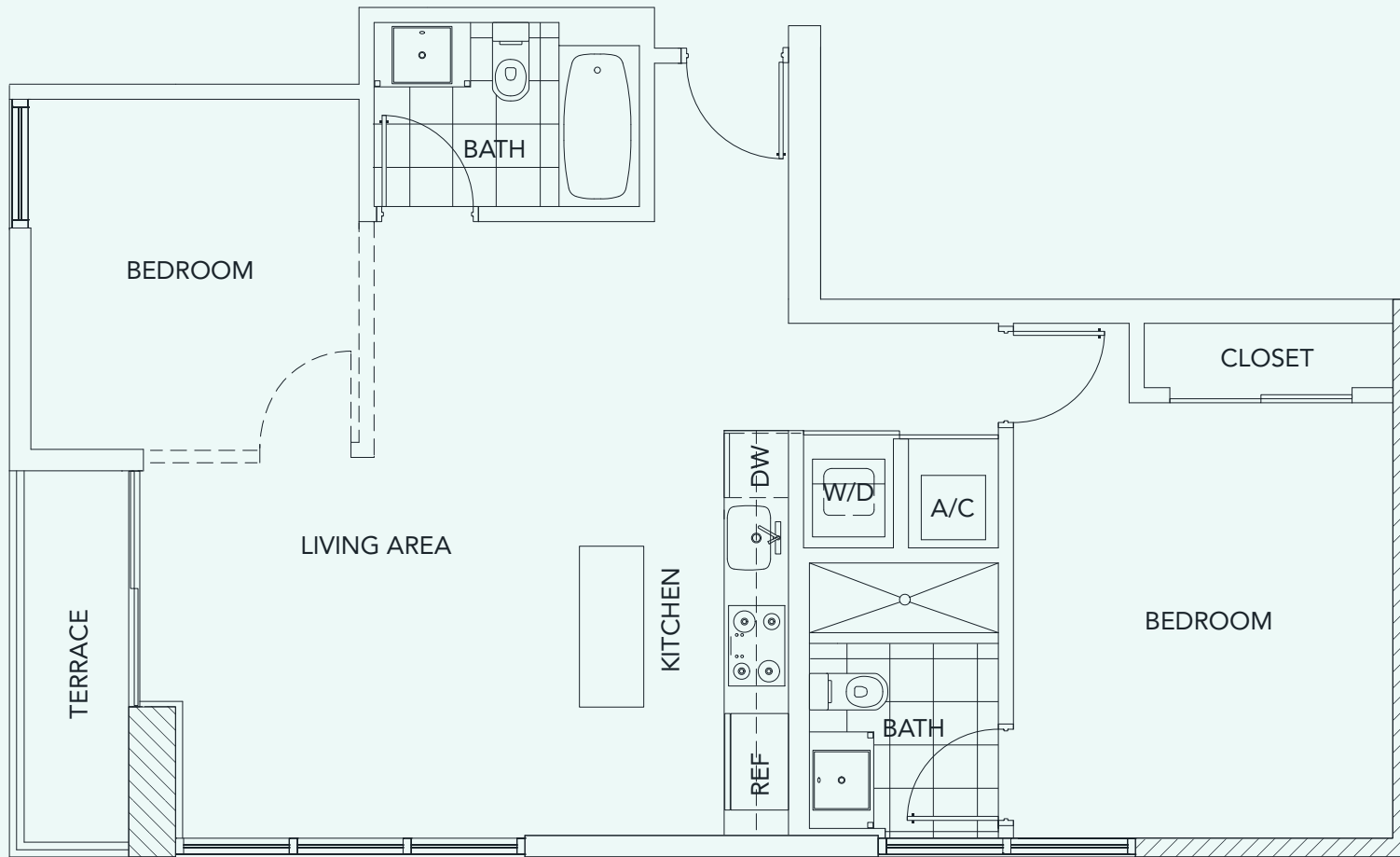
GUSMAN THEATRE



SE 2ND AVE

SE 1ST STREET

Stated dimensions are measured to the exterior boundaries of the exterior walls and the centerline of interior demising walls and in fact vary from the dimensions that would be determined by using the description and definition of the "Unit" set forth in the Declaration (which generally only includes the interior airspace between the perimeter walls and excludes interior structural components). For your reference, the area of the Unit, determined in accordance with those defined unit boundaries, is 1,131 sq.ft. Note that measurements of rooms set forth on this floor plan are generally taken at the greatest points of each given room (as if the room were a perfect rectangle), without regard for any cutouts. Accordingly, the area of the actual room will typically be smaller than the product obtained by multiplying the stated length times width. All dimensions are approximate and may vary with actual construction, and all floor plans and development plans are subject to change.

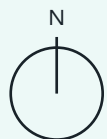


UNIT B

BEDROOM 2
BATH 2

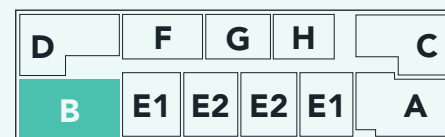
A/C 920 SQ.FT. 85.4 SQ.M.
TERRACE 42 SQ.FT. 3.9 SQ.M.

TOTAL 962 SQ.FT. 89.3 SQ.M.



KEYPLAN

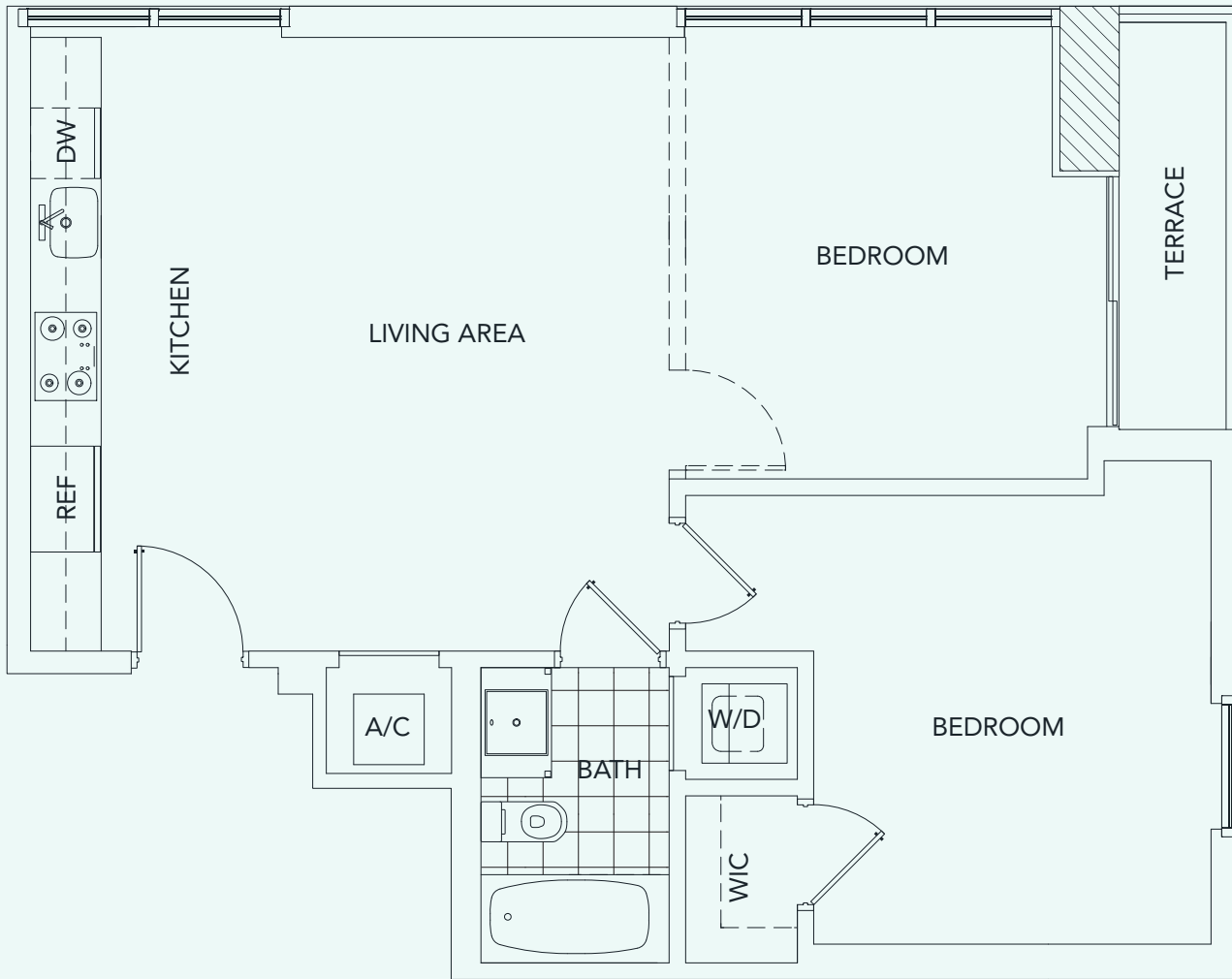
GUSMAN THEATRE



SE 2ND AVE

SE 1ST STREET

Stated dimensions are measured to the exterior boundaries of the exterior walls and the centerline of interior demising walls and in fact vary from the dimensions that would be determined by using the description and definition of the "Unit" set forth in the Declaration (which generally only includes the interior airspace between the perimeter walls and excludes interior structural components). For your reference, the area of the Unit, determined in accordance with those defined unit boundaries, is 920 sq.ft. Note that measurements of rooms set forth on this floor plan are generally taken at the greatest points of each given room (as if the room were a perfect rectangle), without regard for any cutouts. Accordingly, the area of the actual room will typically be smaller than the product obtained by multiplying the stated length times width. All dimensions are approximate and may vary with actual construction, and all floor plans and development plans are subject to change.



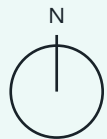
UNIT C

BEDROOM 2
BATH 1

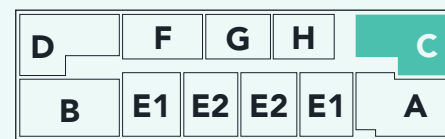
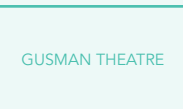
A/C	822	SQ.FT.	76.3	SQ.M.
TERRACE	42	SQ.FT.	3.9	SQ.M.

TOTAL 864 SQ.FT. 80.2 SQ.M.

Stated dimensions are measured to the exterior boundaries of the exterior walls and the centerline of interior demising walls and in fact vary from the dimensions that would be determined by using the description and definition of the "Unit" set forth in the Declaration (which generally only includes the interior airspace between the perimeter walls and excludes interior structural components). For your reference, the area of the Unit, determined in accordance with those defined unit boundaries, is 822 sq.ft. Note that measurements of rooms set forth on this floor plan are generally taken at the greatest points of each given room (as if the room were a perfect rectangle), without regard for any cutouts. Accordingly, the area of the actual room will typically be smaller than the product obtained by multiplying the stated length times width. All dimensions are approximate and may vary with actual construction, and all floor plans and development plans are subject to change.

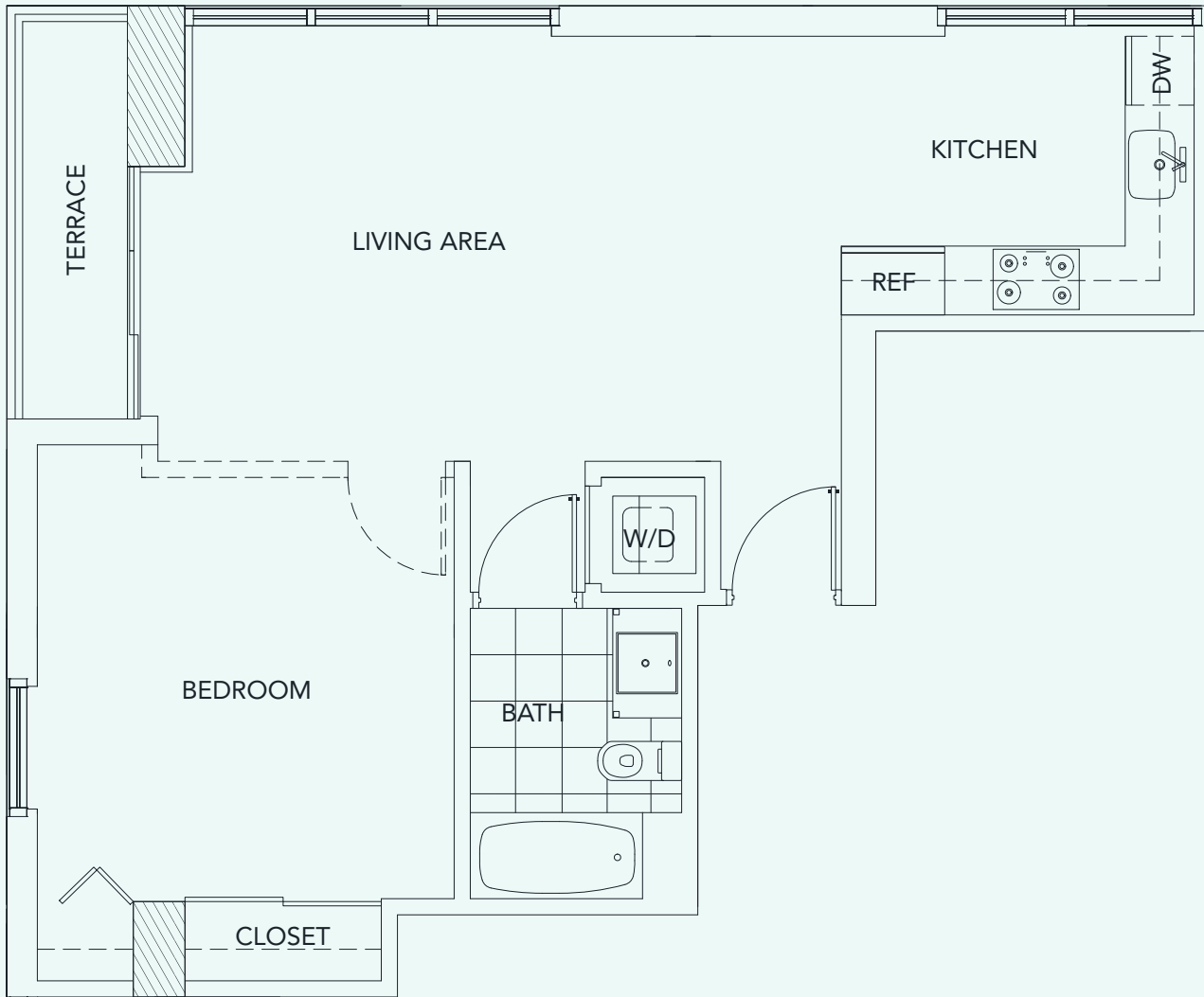


KEYPLAN



SE 2ND AVE

SE 1ST STREET

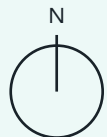


UNIT D

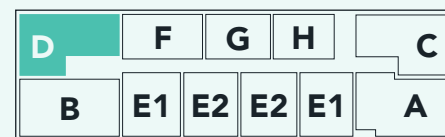
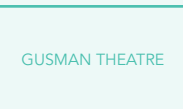
BEDROOM 1
BATH 1

A/C 691 SQ.FT. 64.1 SQ.M.
TERRACE 42 SQ.FT. 3.9 SQ.M.

TOTAL 733 SQ.FT. 68 SQ.M.



KEYPLAN



SE 2ND AVE
SE 1ST STREET

Stated dimensions are measured to the exterior boundaries of the exterior walls and the centerline of interior demising walls and in fact vary from the dimensions that would be determined by using the description and definition of the "Unit" set forth in the Declaration (which generally only includes the interior airspace between the perimeter walls and excludes interior structural components). For your reference, the area of the Unit, determined in accordance with those defined unit boundaries, is 691 sq.ft. Note that measurements of rooms set forth on this floor plan are generally taken at the greatest points of each given room (as if the room were a perfect rectangle), without regard for any cutouts. Accordingly, the area of the actual room will typically be smaller than the product obtained by multiplying the stated length times width. All dimensions are approximate and may vary with actual construction, and all floor plans and development plans are subject to change.

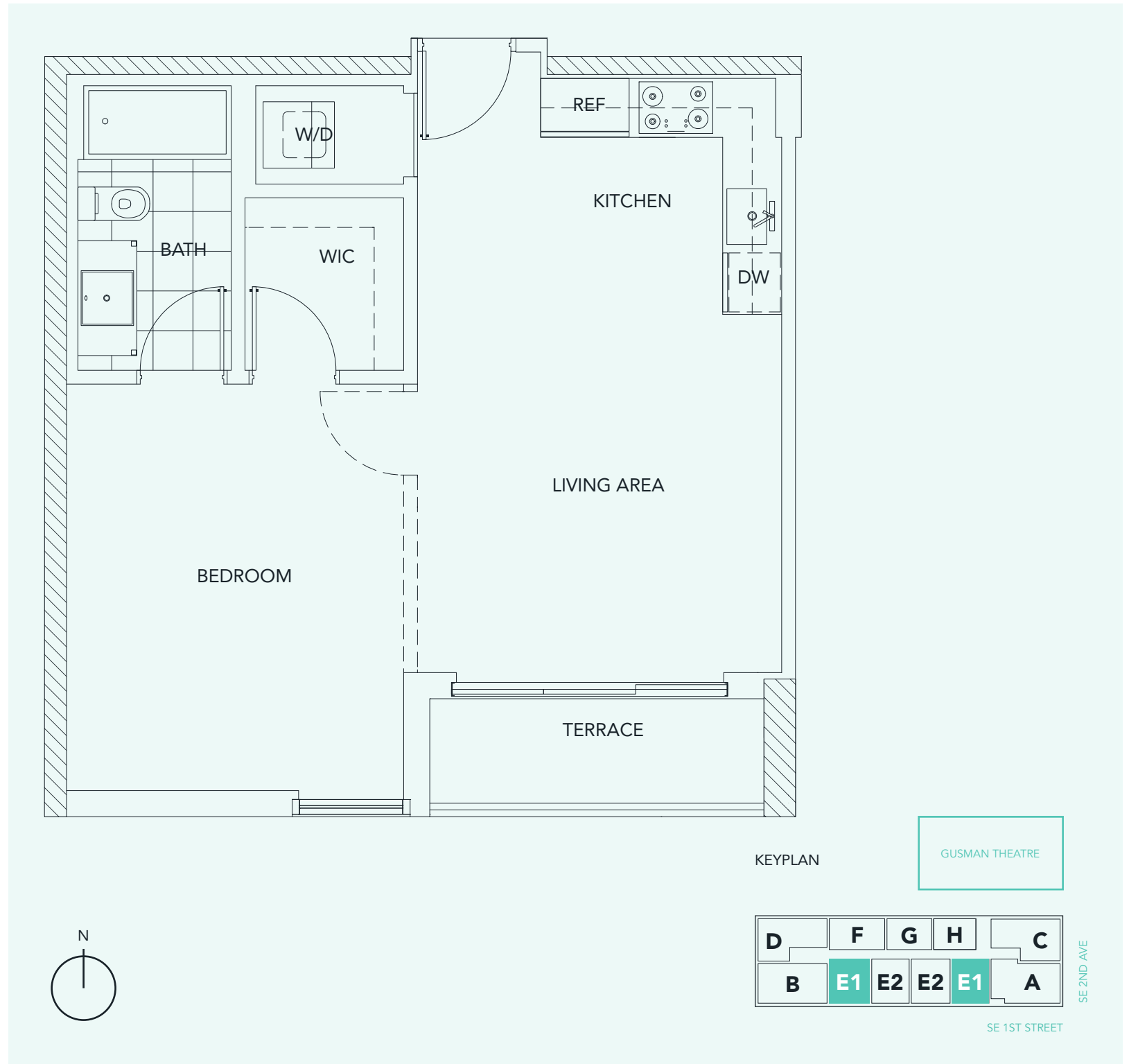
UNIT E1

BEDROOM 1
BATH 1

A/C 654 SQ.FT. 60.7 SQ.M.
TERRACE 49 SQ.FT. 4.5 SQ.M.

TOTAL 703 SQ.FT. 65.3 SQ.M.

Stated dimensions are measured to the exterior boundaries of the exterior walls and the centerline of interior demising walls and in fact vary from the dimensions that would be determined by using the description and definition of the "Unit" set forth in the Declaration (which generally only includes the interior airspace between the perimeter walls and excludes interior structural components). For your reference, the area of the Unit, determined in accordance with those defined unit boundaries, is 654 sq.ft. Note that measurements of rooms set forth on this floor plan are generally taken at the greatest points of each given room (as if the room were a perfect rectangle), without regard for any cutouts. Accordingly, the area of the actual room will typically be smaller than the product obtained by multiplying the stated length times width. All dimensions are approximate and may vary with actual construction, and all floor plans and development plans are subject to change.

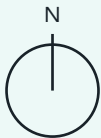
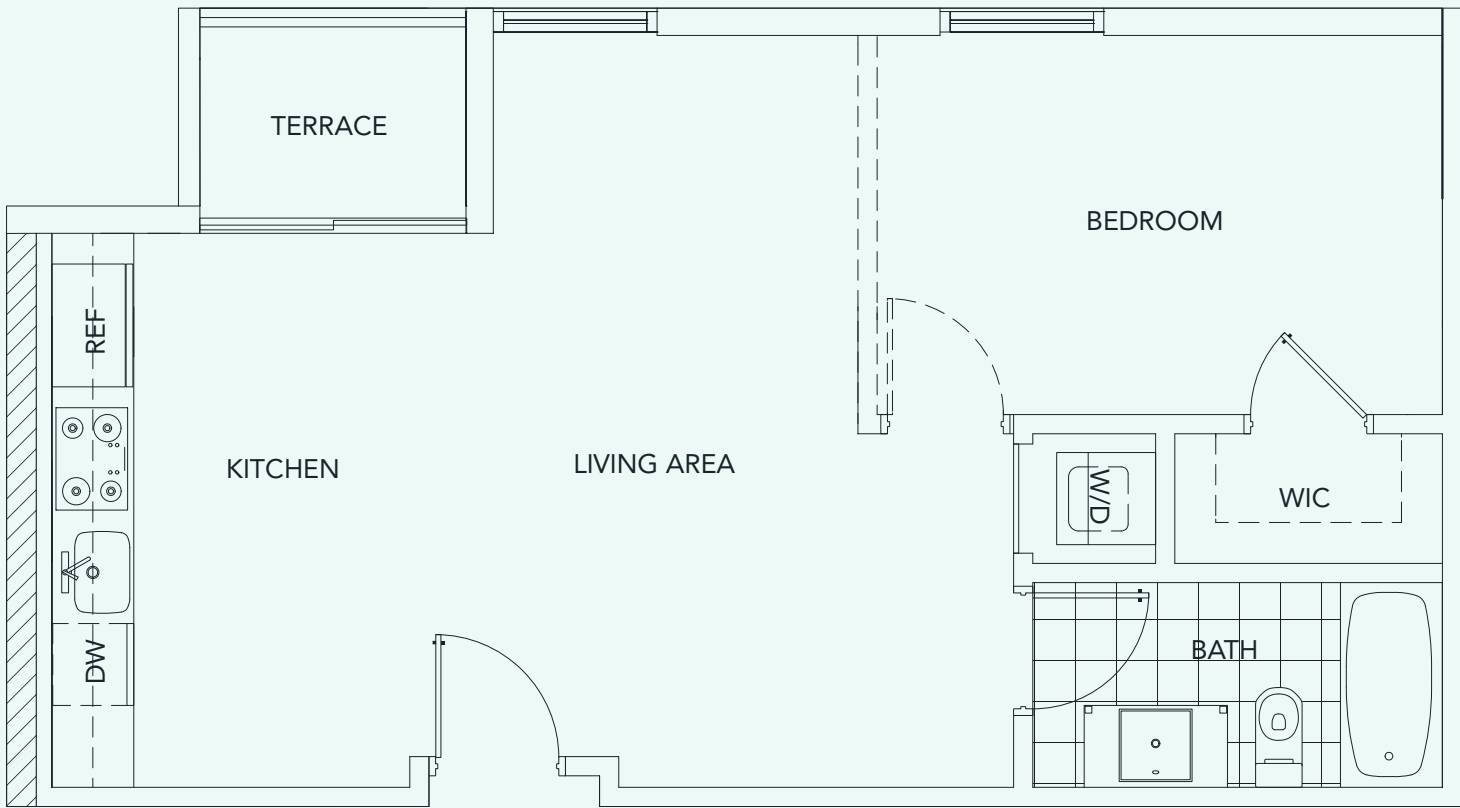


UNIT F

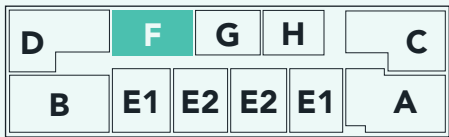
BEDROOM 1
BATH 1

A/C 642 SQ.FT. 59.6 SQ.M.
TERRACE 31 SQ.FT. 2.8 SQ.M.

TOTAL 673 SQ.FT. 62.5 SQ.M.



KEYPLAN

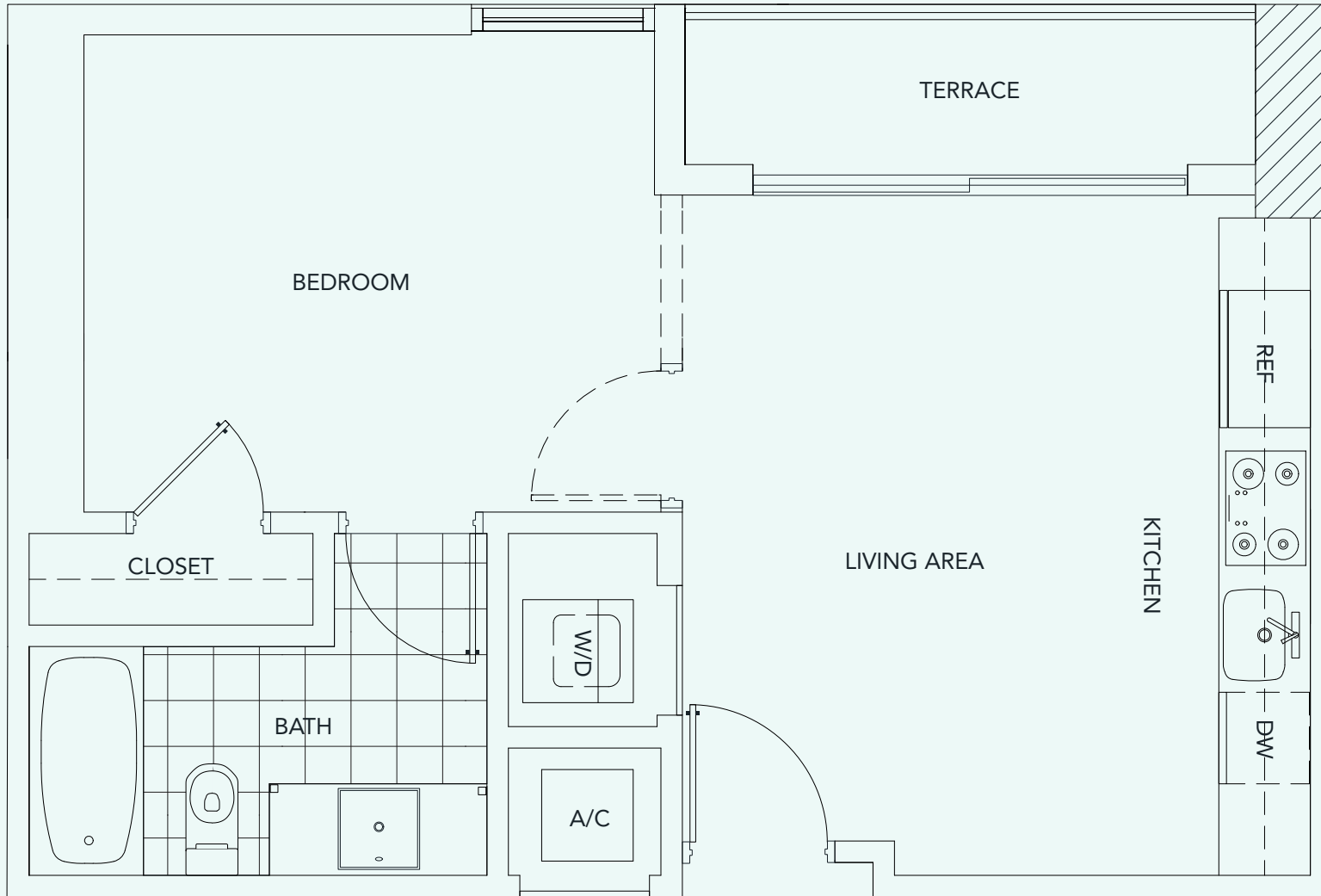


SE 1ST STREET

SE 2ND AVE

Stated dimensions are measured to the exterior boundaries of the exterior walls and the centerline of interior demising walls and in fact vary from the dimensions that would be determined by using the description and definition of the "Unit" set forth in the Declaration (which generally only includes the interior airspace between the perimeter walls and excludes interior structural components). For your reference, the area of the Unit, determined in accordance with those defined unit boundaries, is 642 sq.ft. Note that measurements of rooms set forth on this floor plan are generally taken at the greatest points of each given room (as if the room were a perfect rectangle), without regard for any cutouts. Accordingly, the area of the actual room will typically be smaller than the product obtained by multiplying the stated length times width. All dimensions are approximate and may vary with actual construction, and all floor plans and development plans are subject to change.

UNIT G

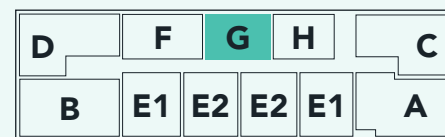


BEDROOM 1
BATH 1

A/C	500	SQ.FT.	46.4	SQ.M.
TERRACE	44	SQ.FT.	4	SQ.M.

TOTAL 544 SQ.FT. 50.5 SQ.M.

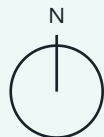
KEYPLAN



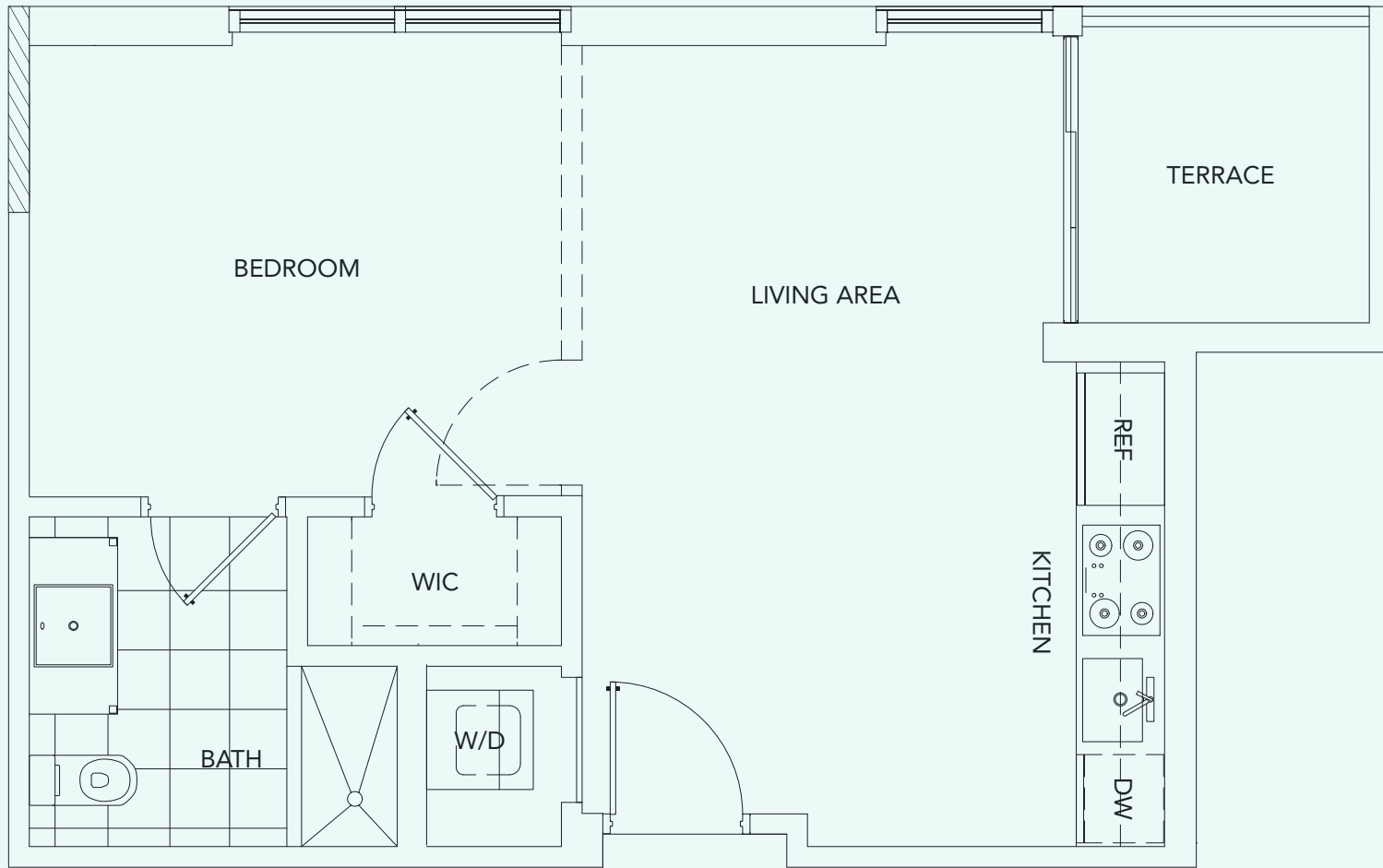
SE 2ND AVE

SE 1ST STREET

Stated dimensions are measured to the exterior boundaries of the exterior walls and the centerline of interior demising walls and in fact vary from the dimensions that would be determined by using the description and definition of the "Unit" set forth in the Declaration (which generally only includes the interior airspace between the perimeter walls and excludes interior structural components). For your reference, the area of the Unit, determined in accordance with those defined unit boundaries, is 500 sq.ft. Note that measurements of rooms set forth on this floor plan are generally taken at the greatest points of each given room (as if the room were a perfect rectangle), without regard for any cutouts. Accordingly, the area of the actual room will typically be smaller than the product obtained by multiplying the stated length times width. All dimensions are approximate and may vary with actual construction, and all floor plans and development plans are subject to change.



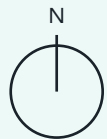
UNIT H



BEDROOM 1
BATH 1

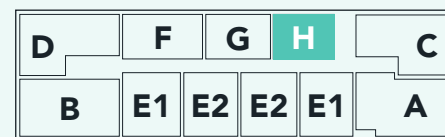
A/C	500	SQ.FT.	46.4	SQ.M.
TERRACE	46	SQ.FT.	4.2	SQ.M.

TOTAL 546 SQ.FT. 50.7 SQ.M.



KEYPLAN

GUSMAN THEATRE



SE 1ST STREET

SE 2ND AVE

Stated dimensions are measured to the exterior boundaries of the exterior walls and the centerline of interior demising walls and in fact vary from the dimensions that would be determined by using the description and definition of the "Unit" set forth in the Declaration (which generally only includes the interior airspace between the perimeter walls and excludes interior structural components). For your reference, the area of the Unit, determined in accordance with those defined unit boundaries, is 500 sq.ft. Note that measurements of rooms set forth on this floor plan are generally taken at the greatest points of each given room (as if the room were a perfect rectangle), without regard for any cutouts. Accordingly, the area of the actual room will typically be smaller than the product obtained by multiplying the stated length times width. All dimensions are approximate and may vary with actual construction, and all floor plans and development plans are subject to change.