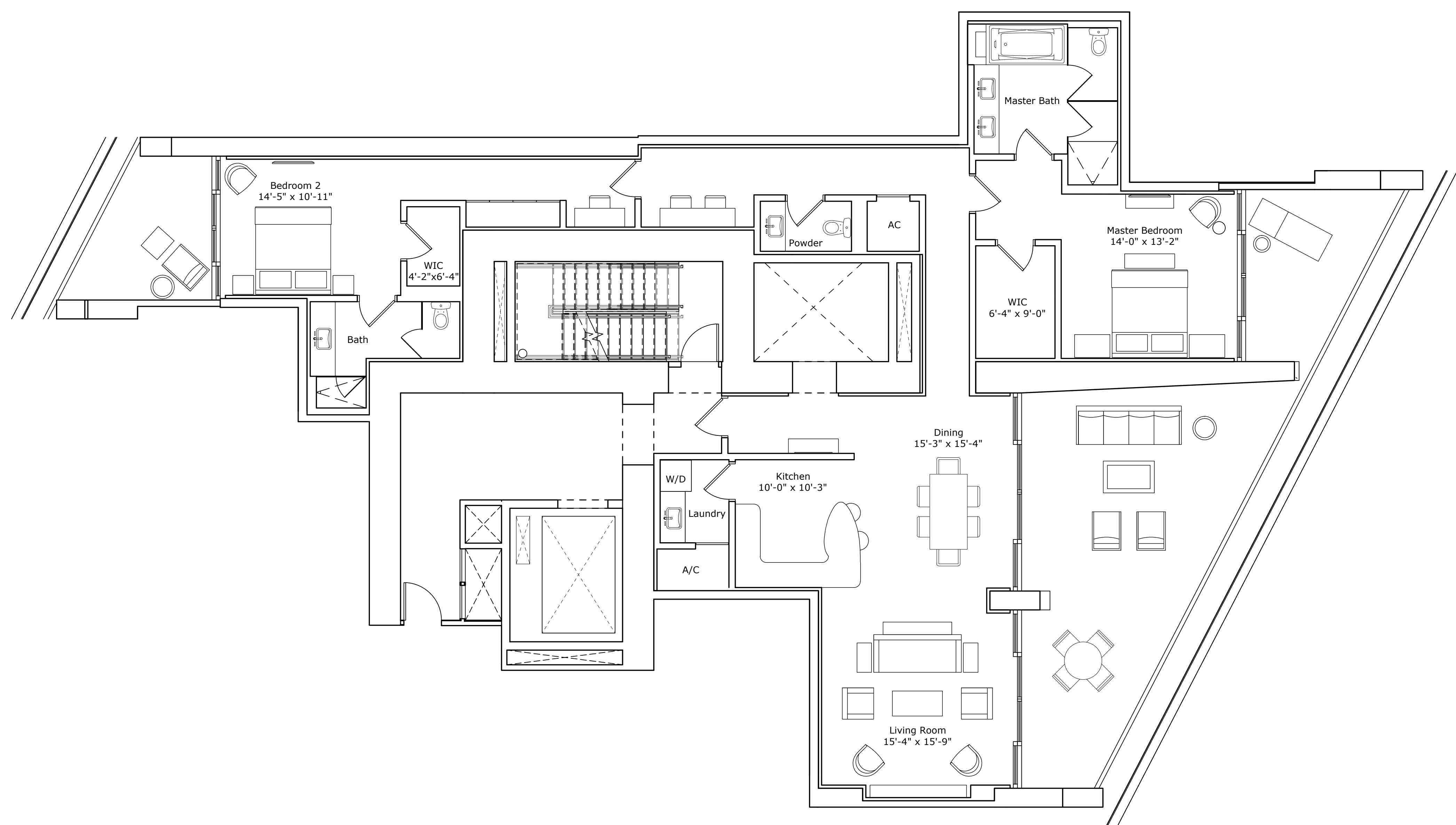


DEVELOPED BY
FORTUNE INTERNATIONAL

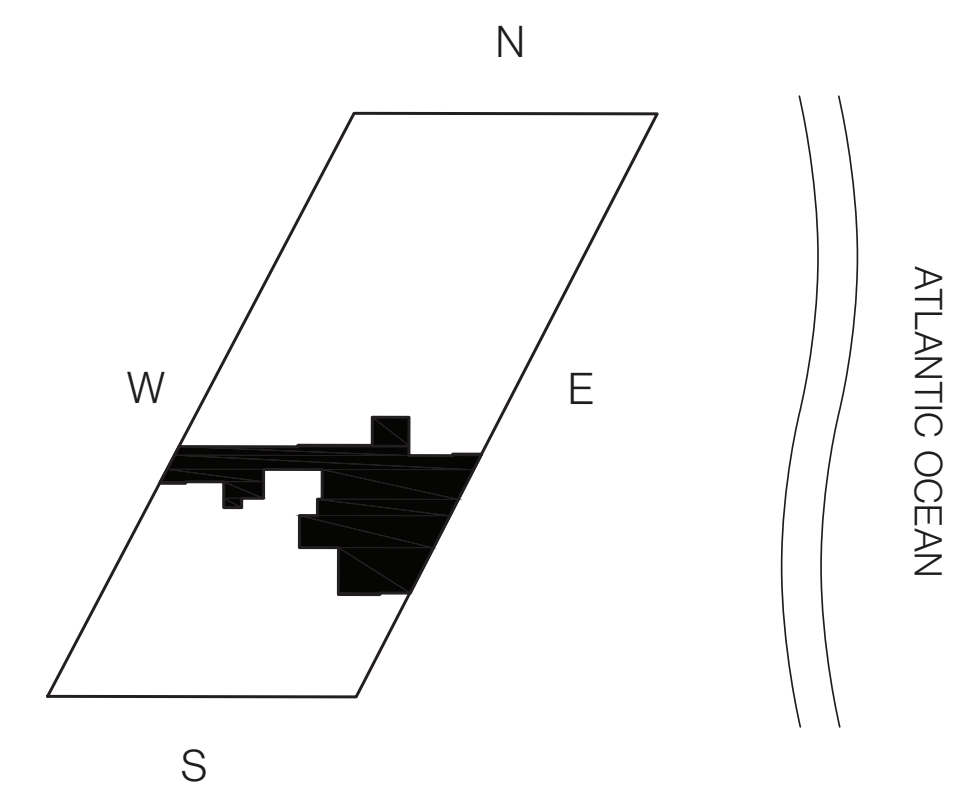
CREATED BY
HERZOG & DE MEURON

INTERIOR ARCHITECTURE
PYR LED BY PIERRE-YVES ROCHON



JADE SIGNATURE

Call Carole Ramirez-Hansen 786-586-4780



SIGNATURE RESIDENCE MODEL C

LINE 02

BUILDING ZONE ZONE A
FLOORS 5 - 25

RESIDENCE DESCRIPTION
2 BED / 2.5 BATH

INTERIOR	2,047 SQ FT	190 SQ M
OUTDOOR LIVING	550 SQ FT	51 SQ M
TOTAL	2,597 SQ FT	241 SQ M

SCALE 3/16" = 1 FT

hansenhomesventura.com



STATED DIMENSIONS ARE MEASURED TO THE EXTERIOR BOUNDARIES OF THE EXTERIOR WALLS AND STRUCTURAL MEMBERS AND THE CENTERLINE OF INTERIOR DEMISING WALLS AND, IN FACT, VARY FROM THE DIMENSIONS THAT WOULD BE DETERMINED BY USING THE DESCRIPTION AND DEFINITION OF THE "UNIT" SET FORTH IN THE DECLARATION (WHICH GENERALLY ONLY INCLUDES THE INTERIOR AIRSPACE BETWEEN THE PERIMETER WALLS AND EXCLUDES INTERIOR STRUCTURAL COMPONENTS). ALL DIMENSIONS ARE APPROXIMATE, ARE SUBJECT TO FINAL SURVEY AND MAY VARY WITH ACTUAL CONSTRUCTION. THE FLOOR PLAN, DEVELOPMENT PLANS AND THE ENTITIES COLLABORATING WITH DEVELOPER ARE SUBJECT TO CHANGE. ALL DEPICTIONS OF FURNISHINGS, FINISHES, APPLIANCES, COUNTERS, SOFFITS, FLOOR COVERINGS AND OTHER MATTERS OF DETAIL, INCLUDING, WITHOUT LIMITATION, ITEMS OF FINISH AND DECORATION, ARE CONCEPTUAL ONLY AND ARE NOT NECESSARILY INCLUDED IN EACH UNIT. CONSULT YOUR AGREEMENT AND THE PROSPECTUS FOR THE ITEMS INCLUDED WITH THE UNIT. THE BALCONY DEPICTED IS THE STANDARD BALCONY ALTHOUGH THE BALCONY SIZE AND CONFIGURATION VARIES AT EVERY LEVEL. FOR A DEPICTION OF THE BALCONY FOR YOUR UNIT SEE EXHIBIT 2 TO THE DECLARATION. FORTUNE INTERNATIONAL IS NOT THE DEVELOPER. THE CONDOMINIUM IS BEING DEVELOPED BY SUNNY ISLES BEACH ASSOCIATES, LLC, WHICH HAS A LIMITED RIGHT TO USE THE TRADEMARKED NAME AND LOGO OF FORTUNE INTERNATIONAL. ORAL REPRESENTATIONS CANNOT BE RELIED UPON AS CORRECTLY STATING REPRESENTATIONS OF THE DEVELOPER. FOR CORRECT REPRESENTATIONS, MAKE REFERENCE TO THE DOCUMENTS REQUIRED BY SECTION 718.305, FLORIDA STATUTES, TO BE FURNISHED BY A DEVELOPER TO A BUYER OR LESSEE. **ARCHITECT OF RECORD - ADD INC.**